

Mirror of the soul

The easiest way to use the Children's Symbols in the kindergarten, or at school, is the spontaneous drawing of a symbol card. It enables you to see which topics are important for your child now, or which energies influence your child's subtle field.



- » Place all the symbol cards upside down on a smooth surface (table, floor, etc.), and let your child mix the cards up.



- » Let your child draw one of the 21 Angel cards.



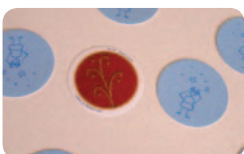
- » Have a look which angel symbol your child has drawn. Read the corresponding text in the book to find out what the symbol wants to tell you about the child (text in the light blue box).



- » Try to talk to your child about the message the symbol gave you. Be aware that the symbol does not only hint at your child's blockages, fears, insecurities or problems, but often also reflects the child's social environment.



- » If the child wants to, it can put the symbol on a photo, or wear it near the body (pockets, bags or similar).



- » As soon as the child is ready, you can draw another symbol after some days or weeks. Before drawing another symbol, put the 'old' symbol back with the others.