

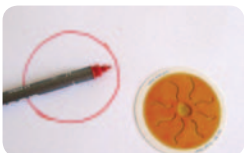
Sending an angel

This is a playful way of sending other people an angel. For example, somebody the child wants to help, or who it has a problem with, or who is ill. By placing the Children's Symbol on a drawing, or a photo, of this person, the angelic world transfers the energy of this symbol on to this person. It could be, for example, a friend from kindergarten, or school.

Proceed as follows:



- » Ask the child who it wants to send an angel to, and let it choose a symbol for this person.



- » Then the child puts the Children's Symbol on a sheet of white paper and traces the contours of the symbol, making a circle.



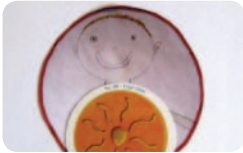
- » Afterwards the child draws a picture of the person who it wants to send an angel to, into the circle. Of course, the child can also send an angel to itself, if it would like to do so!



- » After that the child cuts out the circle – you may help with this.



- » Then it puts the drawing in a place where it can remain undisturbed. This might be a bookshelf or a drawer.



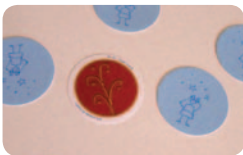
» Then the child places the Angel Symbol on the drawing.



» Together with the child you ask the particular angel to send his energy to the person.



» Let the child decide for how long the symbol should remain on the drawing (it could be days or weeks; trust in the child's intuition).



» Perhaps the symbol will be replaced by another one after some days – the child knows and should decide.



» If you have become curious, then read the text that corresponds with the symbol. You can assume that there is a hidden message in it.